

MODEL P-1630

OPERATION	SIGNAL GENERATOR		DUMMY CAPACITY	SPECIAL INSTRUCTIONS	ADJUST PADDER
	FREQUENCY	CONNECTION			
1	Press the return to dial button until stations can be tuned in by manual tuning.				
2	470 K.C.	To Grid of 6A7 Tube	.1 Mfd.	Turn Tuning Condenser Plates Out of Mesh as Far as They Will Go.	Ⓐ ⑱ ⑲
3	1580 K.C.	To Antenna Receptacle on Radio	* 20 Mmf. See Note 1	Note 2	Ⓒ
4	1400 K.C.	To Antenna Receptacle on Radio	* 20 Mmf. See Note 1	Set Tuning Condenser at 1400 K. C.	Ⓓ Note 4
5	580 K.C.	To Antenna Receptacle on Radio	* 20 Mmf. See Note 1	Set Tuning Condenser at 580 K. C.	Ⓔ Note 3
6	1580 K.C.	To Antenna Receptacle on Radio	* 20 Mmf. See Note 1	Note 2	Ⓕ
7	1400 K.C.	To Antenna Receptacle on Radio	* 20 Mmf. See Note 1	Set Tuning Condenser at 1400 K. C.	Ⓖ Note 4

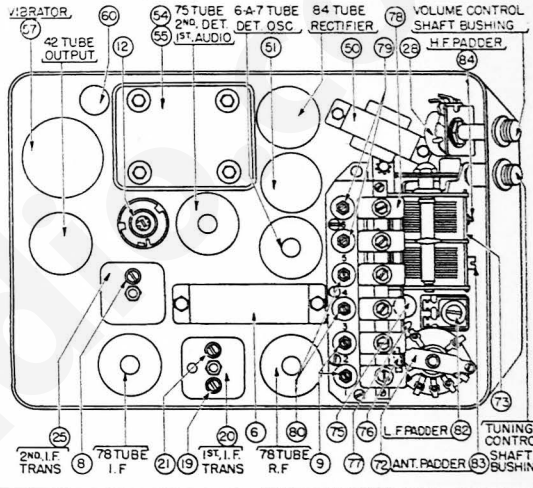
Make all adjustments for maximum reading on the output meter.

NOTE 1 — Connect the antenna lead, Part No. L-2785 (Model P-1630) 41-3191 (Model P-1635) to the antenna receptacle in the radio. Connect a 20 mmf. (Model P-1630) or 250 mmf. (Model P-1635) Condenser in series between the signal generator and the antenna lead.

Special Note: — When the cowl antenna is used follow the above procedure. Be sure the lead to the antenna transformer is connected to the black terminal of the Antenna Transformer.
***When the undercar or roof antenna is used, connect the antenna lead, Part No. 41-3191 (Model P-1630) or L-2785 (Model P-1635) to the antenna receptacle in the Radio. Connect a 250 mmf. (Model P-1630) or 20 mmf. (Model P-1635) condenser in series between the signal generator and the antenna lead. Be sure the lead to the antenna transformer is connected to the red terminal of the antenna transformer.**

NOTE 2 — Turn the condenser rotor plates completely out of mesh as far as they will go.
NOTE 3 — Rock the tuning condenser while adjusting the low frequency padder. Tune the condenser to the signal and adjust the padder for maximum output. Rotate the tuning condenser back and forth slightly for maximum output. Then readjust the padder for maximum output. Repeat this procedure until no further improvement is noticed.

NOTE 4 — When the antenna stage adjustment is made with the Radio installed in the car, the Radio antenna lead must be connected to the car antenna in the usual manner. Connect the signal generator output lead to a wire placed near the car antenna but not connected to it.



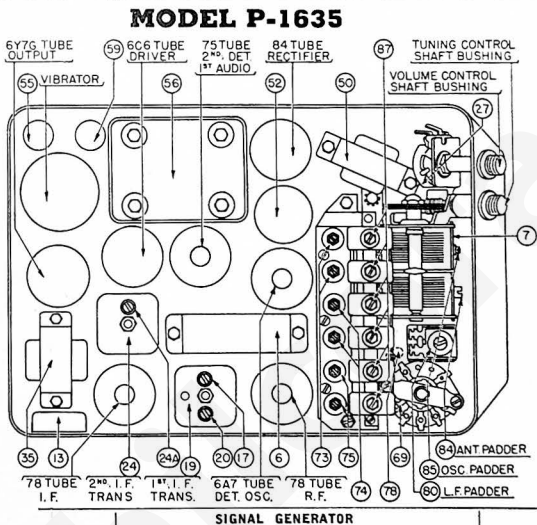
Make all adjustments for maximum reading on the output meter.

NOTE 1 — Connect the antenna lead, Part No. L-2785 (Model P-1630) 41-3191 (Model P-1635) to the antenna receptacle in the radio. Connect a 20 mmf. (Model P-1630) or 250 mmf. (Model P-1635) Condenser in series between the signal generator and the antenna lead.

Special Note: — When the cowl antenna is used follow the above procedure. Be sure the lead to the antenna transformer is connected to the black terminal of the Antenna Transformer.
***When the undercar or roof antenna is used, connect the antenna lead, Part No. 41-3191 (Model P-1630) or L-2785 (Model P-1635) to the antenna receptacle in the Radio. Connect a 250 mmf. (Model P-1630) or 20 mmf. (Model P-1635) condenser in series between the signal generator and the antenna lead. Be sure the lead to the antenna transformer is connected to the red terminal of the antenna transformer.**

NOTE 2 — Turn the condenser rotor plates completely out of mesh as far as they will go.
NOTE 3 — Rock the tuning condenser while adjusting the low frequency padder. Tune the condenser to the signal and adjust the padder for maximum output. Rotate the tuning condenser back and forth slightly for maximum output. Then readjust the padder for maximum output. Repeat this procedure until no further improvement is noticed.

NOTE 4 — When the antenna stage adjustment is made with the Radio installed in the car, the Radio antenna lead must be connected to the car antenna in the usual manner. Connect the signal generator output lead to a wire placed near the car antenna but not connected to it.



OPERATION	SIGNAL GENERATOR		DUMMY CAPACITY	SPECIAL INSTRUCTIONS	ADJUST PADDER
	FREQUENCY	CONNECTION			
1	Press the return to dial button until stations can be tuned in by manual tuning.				
2	470 K.C.	To Grid of 6A7 Tube	.1 Mfd.	Turn Tuning Condenser Plates Out of Mesh as Far as They Will Go.	ⒶA ⑳ ⑲
3	1580 K.C.	To Antenna Receptacle on Radio	*250 Mmf. See Note 1	Note 2	Ⓒ
4	1400 K.C.	To Antenna Receptacle on Radio	*250 Mmf. See Note 1	Set Tuning Condenser at 1400 K. C.	Ⓓ Note 4
5	580 K.C.	To Antenna Receptacle on Radio	*250 Mmf. See Note 1	Set Tuning Condenser at 580 K. C.	Ⓔ Note 3
6	1580 K.C.	To Antenna Receptacle on Radio	*250 Mmf. See Note 1	Note 2	Ⓕ
7	1400 K.C.	To Antenna Receptacle on Radio	*250 Mmf. See Note 1	Set Tuning Condenser at 1400 K. C.	Ⓖ Note 4